

INTERSECTION

@
DOWNTOWN WEST PALM BEACH



LIVE



WORK



PLAY



THE WORLD IS IN
WEST PALM

SHOP



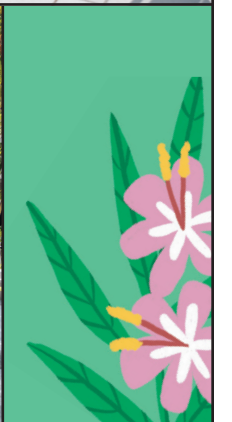
DINE



DREAM



DISCOVER



CELEBRATING SOUTH FLORIDA'S VIBRANT DOWNTOWN



**A SUNNY DAY
ON THE SQUARE**

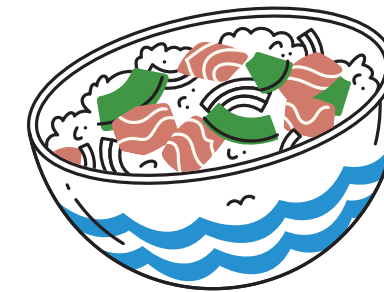
WHAT'S INSIDE



4 A DISCOVERY AROUND EVERY CORNER

6 GET IN & GET OUTSIDE

8 CULTURE CENTRAL



10 EATS MEETS WEST

12 PUTTING WEST PALM ON THE CULINARY MAP



14 THE ALLURE OF WORKING IN WEST PALM

16 THE CENTER OF THE WORLD: A FOLD-OUT MAP OF DOWNTOWN WEST PALM

20 LIVING IN DOWNTOWN WEST PALM

22 THE PERFECT STAYCATION



24 GET TO KNOW THE LOCALS

26 WELLNESS IS OUR WAY OF LIFE

28 THE ULTIMATE SHOWCASE FOR BRANDS



30 KIDS LOVE THE SQUARE

32 MEET THE VISIONARIES



A
DISCOVERY
 AROUND
 EVERY
CORNER



Whether you're connecting with innovative public art, tasting new and favorite flavors or falling in love with the latest trends, The Square inspires.



This page (from top): The Square is filled with public art, including *Rising Signs*, three sets of decorative staircases; *Water Pavilion West Palm*, a sensory experience for all ages; and an expansive mural by RETNA on the east facade of RH West Palm's 80,000-square-foot gallery.

Opposite page (clockwise from top left): The Birdie Floral Truck offers artfully composed countryside dried bouquets; every evening *The Wishing Tree's* 100,000 LED lights illuminate the square; Wayne Perry, aka Mister Trombone, performs at Hilton West Palm Beach; an internationally inspired menu awaits diners at Hilton West Palm Beach's signature restaurant Galley; the two-story Urban Outfitters store has a selection for everyone.



GET IN &



GET OUTSIDE



LET'S TALK
ACCESSIBILITY

Daily nonstop service is available from New York, Boston, Chicago, Atlanta, Philadelphia, Washington D.C. and dozens of other major cities. Private travelers can choose from several FBOs, including Atlantic Aviation, Jet Aviation and Signature Flight Support as well as the NetJets Terminal. Commuting throughout Palm Beach, Broward and Miami-Dade counties is also a breeze thanks to high-speed passenger train Brightline, providing a stress-free, no-traffic jaunt to and from Miami in one hour and Fort Lauderdale in 30 minutes, with plans for additional stations in Aventura, Boca, Orlando and Tampa.



1 MILE TO PALM BEACH ISLAND

INTERCITY PASSENGER RAIL OPTIONS: BRIGHTLINE AND TRI-RAIL

2

3 MILES TO PALM BEACH INTERNATIONAL AIRPORT

4 MINUTE WALK FROM BRIGHTLINE STATION TO HILTON WEST PALM BEACH



MORE THAN 60 SHOPS & RESTAURANTS
OPEN 365 DAYS A YEAR
77-DEGREE AVERAGE TEMP



1,000 OUTDOOR DINING SEATS

OVER 1 MILLION CUPS OF COFFEE SERVED ANNUALLY

2.5 ACRES OF PUBLIC & GREEN SPACE

2,000 SQUARE FEET OF MURALS

150+ EVENTS ANNUALLY

OVER 20 MARRIAGE PROPOSALS IN THE SQUARE EACH YEAR



WALKABLE URBAN NEIGHBORHOOD

Economic development has allowed Downtown West Palm to become a green, mixed-use, community-friendly area. Local sustainability practices place people and quality of life first. Residents rely less on cars and opt for eco-friendly transportation as Downtown West Palm offers conveniences (grocery stores, medical offices, restaurants), culture (museums and public libraries) and scenery (bike trails, Intracoastal Waterway and Atlantic Ocean), all within walking and biking distance.

INFINITE IG-WORTHY SPOTS
#THESQUAREWESTPALM





Culture Central

Thanks to a newly renovated museum, a growing number of well-respected art spaces and an appetite for local, national and global talent, Downtown West Palm is now a contemporary art destination.



Clockwise from left: LED light installation *MEIYW (My East Is Your West)* by Mumbai-based Shilpa Gupta challenges viewers to reflect upon social, political and geographical boundaries and identities; famed British-Nigerian artist Yinka Shonibare CBE, whose newly commissioned large-scale wind sculpture *Material (SG) II* lives on the outdoor plaza of 360 Rosemary; *Rising Signs*, a staircase installation by Carlton DeWoody and Eric Adolfsen; plaza outside of Kravis Center for the Performing Arts; The Square's facades are brought to life with the bright and colorful visions of Chalk & Brush, aka Miami artists Cinthia Santos and Benjamin Levy; the Norton Museum of Art, an impactful art institution with more than 7,600 works in its permanent collection.



Clockwise from top: *The Wishing Tree*, a technological marvel designed by Symmetry Labs, serves as a reminder of how nature and humans can harmoniously connect; Asser Saint-Val participates in New Wave's artist-in-residence program at The Square, which brings emerging artists from diverse and underrepresented communities to the forefront of a booming art hub; presenting rotating exhibitions and viewable storage of the Beth Rudin DeWoody Collection, The Bunker showcases a wide range of contemporary art by both well-known and emerging artists; *Water Pavilion West Palm*, created by Berlin-based artist Jeppe Hein, beckons visitors to interact with its walls of water.

EATS MEETS WEST

The restaurants at The Square offer fresh, local fare to suit any craving. Whether you're looking for date-night dinner, a post-run refuel or alfresco lunch with friends, the perfect option awaits.

WHY TRUE FOOD KITCHEN IS TRULY AMAZING

Heavy in nutrients and often organic and gluten-free, this menu is packed with fresh flavor.

Created according to guidelines by integrative medicine expert Dr. Andrew Weil, the seasonal menu at True Food Kitchen is designed to be anti-inflammatory and good for both you and the planet. There's no sacrificing flavor or indulgence — the menu includes vegetable-driven vegan Korean noodle bowls, alongside pizza with chicken sausage and smoked gouda, with craft cocktails, teas and refreshers, and a rich and fudgy flourless chocolate cake to finish.



PLANTA

FRESH FROM THE FARM

This Toronto-grown destination specializes in vegan, plant-based fare.

At Planta, eating well holds double meaning with a menu full of surprises and delights, turning vegetables into rich, savory comfort food, snacks, ceviche and sushi, brilliantly crafted without any meat, fish or dairy. The results include spicy "ahi" watermelon over crispy rice, and pizzas made with cashew "mozzarella" and mushroom "bacon," all created in a way that promotes sustainability and wellness, yet never compromises on flavor or fun.



RH Rooftop SHOP & SAVOR

RH Rooftop is a lush skylit oasis perched above the city.

Impeccably decorated with the brand's furnishings, including cozy seating and eclectic table settings, the all-day dining destination is ideal for burgers and salads at lunchtime and heartier fare for dinner. A well-chilled rosé and sophisticated espresso drinks can be enjoyed anytime under the shade of olive trees in the rooftop atrium, which offers majestic views from morning until night.

THE SWEET- GREEN OBSESSION

Change your perspective with sustainable, health-driven salads and bowls.

Ask a sweetgreen lover why they are hooked on this bowl and salad eatery and you'll understand why it's seen as more than just a health food destination. The menu is chock-full of flavorful, quick-serve seasonal eats that leave you feeling satisfied and connected to the earth's ingredients.



GALLEY

DINING IN WITHOUT MISSING OUT

Seasonal, local ingredients star in dynamic global dishes and the coolest cocktails.

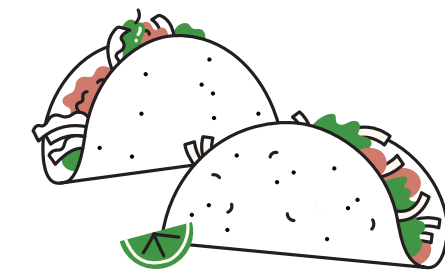
Nestled inside Hilton West Palm Beach, Galley serves the world on a plate, turning exceptional ingredients into globally inspired farm-to-table dishes. Executive Chef Guillermo Eleicegui incorporates elements of his Argentinian roots into smoky parrilla from the massive wood-burning grill, and tapas-style small plates like empanadas with chimichurri aioli. The lively and welcoming indoor-outdoor space flows from the dining room — bold with contemporary art and a stylish plant wall — to an expansive patio encircling a crackling firepit for year-round gatherings.



TASTE THE PURA VIDA

Fresh, simple, sustainable and local are the pillars of this husband-and-wife-run café.

Inspired by global travels and treasured family recipes, Pura Vida is a bright and welcoming addition to the neighborhood, serving a variety of foods and drinks to suit any craving. This trendy meet-up spot offers all-day breakfast, lunch and grab-and-go snacks ranging from superfood juices and smoothies to grain bowls, salads and wraps, as well as coffee and pastries.



10 LOCAVORE SPOTS

Bonitas

From the duo behind neighborhood Mexican spot Zipitios, this colorful new takeout spot serves tacos and tostadas filled with shrimp ceviche, cochinita and other savory fillings.

Barrio

This covered outdoor bar serves empanadas, bocaditos and other dishes inspired by classic Latin neighborhood street food, with cocktails designed to transport you to breezy, tropical destinations.

Loïc Bakery

Down the street from The Square, this bustling bakery serves exceptional spins on classic French pastries, including golden croissants and Paris-worthy baguette sandwiches.

City Cellar

With floor-to-ceiling windows overlooking the center of The Square, this lively bistro serves crowd-pleasing pizzas, steaks and fresh seafood, ideal to pair with wines from its namesake vault.

Pumphouse Coffee at Provisions

Located within Hilton West Palm Beach, Provisions serves up coffee by local roaster Pumphouse. Despite its breezy laid-back vibe, the Jupiter-based roaster produces small-batch, single-origin coffee, often citing the producer with each batch.

Celis Produce

Created by the wellness enthusiast behind the monthly run club held at The Square, this produce market with organic juices, smoothies and healthy breakfast and lunch options is curated by Alex Celis and his brothers.

Grato

Acclaimed chef Clay Conley crafts Italian dishes using the best local ingredients at this loftlike destination south of The Square. Wood-burning ovens add perfect char to pizza, fish and steak, ideal to pair with house-made pastas.

Civil Society Brewing Company

Just south of downtown, this brewery and taproom serves hoppy IPAs ideal for backyard grilling, beach-worthy lagers and limited-edition creations with a devoted following.

El Camino

Self-proclaimed Mexican soul food hot spot, the lively atmosphere and generous margs at El Camino make it an easy choice for lunch, dinner or brunch.

The Salty Donut

Step aside, traditional glazed donut. The must-visit and worth-the-wait Salty Donut offers decadent unions like its famous bacon or cornflake-topped donuts paired with vivacious coffee and good vibes.



"SOUTH FOR WINTER" COCKTAIL FROM TRUE FOOD KITCHEN

INGREDIENTS

FOR THE RUM SOUR MIX:

- 1 oz fresh lime juice
- ½ oz simple syrup
- ½ oz fresh pineapple juice
- ½ oz coconut water

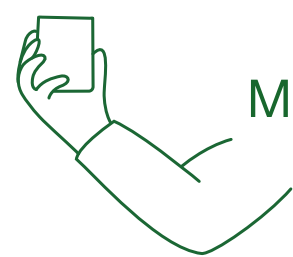
FOR THE COCKTAIL:

- ½ oz vanilla liqueur, such as Giffard Vanilla de Madagascar
- ½ oz banana liqueur, such as Giffard Banane du Brésil
- ½ oz pineapple liqueur, such as Giffard Caribbean Pineapple
- 1 ½ oz spiced rum, such as Drake's Organic Spiced Rum
- 2 ½ oz rum sour mix
- Freshly grated nutmeg, for garnish

DIRECTIONS

1. For the rum sour mix, combine all ingredients in a small jar.
2. For the cocktail, combine liqueurs, rum and rum sour mix in cocktail shaker.
3. Fill cocktail shaker with ice and shake, shake, shake!
4. Pour into glass, preferably a hurricane glass.
5. Garnish with freshly grated nutmeg and enjoy the timeless tastes of vacation!

PUTTING WEST PALM ON THE CULINARY MAP



MEET THE TALENT BRINGING "FEEL GOOD FOOD"

South Florida conjures laid-back vibes, year-round sunshine and an overall commitment to living well. For food lovers, this is a foundation for fantastic meals. And Downtown West Palm is the perfect place to experience the best of it all. Its urban location and tropical oasis atmosphere make it the hottest new destination, and now four elite chefs and restaurateurs are making West Palm the new crown jewel of the culinary world.

PLANTA

There was an instant connection to The Square for Steven Salm, CEO of Chase Hospitality Group. After opening his vegan concept in Toronto, Salm wanted to expand in the U.S. in a way that connected with healthier living and his own love of this tropical destination. "I've been coming to Florida my entire life, and specifically to the Palm Beach area," Salm says. "It was kind of a no-brainer that South Florida was going to be the first location [for Planta] in the U.S." The Square location builds on the popularity of the Planta concept in Miami's South Beach and Coconut Grove.

Unlike with stereotypical vegan food, Planta's Chef David Lee makes meatless dining fun and enjoyable, serving pizzas, loaded nachos, sushi and lasagna, all without meat, fish or dairy. "When Planta was first conceptualized, people assumed vegan translated exclusively to things like raw food and kale. There was a misconception of what plant-based really was," Salm explains. "We wanted to create an environment where people recognized that the food they were already eating could easily fit into a plant-based lifestyle."

TRUE FOOD KITCHEN

With its focus on wellness, community and seasonality, True Food Kitchen was a natural addition in fall 2021. "We couldn't think of a better location in West Palm Beach to bring True Food Kitchen than The Square, surrounded by a dynamic, energetic and wellness-driven community," says Christine Barone, CEO of True Food Kitchen.

Perched with views of the lawn and public art, the airy and bright restaurant feels directly connected to its lush setting, with abundant greenery and potted herbs that surround the outdoor seating serving as a hint of the fresh flavors to come. The health-driven restaurant specializes in fresh, plant-forward dishes and handcrafted beverages, sourcing top-quality ingredients locally and from around the world, including kuzu root, sea buckthorn berry, and wild-caught fish, as well as peak-season produce.

"We utilize eco-friendly materials, including dining chairs made of recycled soda bottles, to further our promise to nourish the body and nurture the planet, as well as natural elements like an earthy color scheme and garden basins filled with fresh herbs and spices," says Barone. That commitment extends from the flavors to the interiors, with walls lined with local art by Chalk & Brush.



From left: Steven Salm, Christine Barone, Peter & Harry Poulakakos, Costas Spiliadis

TO THE NEXT GREAT DINING DESTINATION



HARRY'S AND ADRIENNE'S

As a coveted destination for New Yorkers in search of a change in weather and pace, it's only fitting that the team behind New York City's iconic power-meal institution, Harry's, has chosen 360 Rosemary as the first Florida location for its namesake restaurant, along with its sister pizza bar, Adrienne's, both opening in 2022. Harry's will bring the tastes of Italy to Rosemary Avenue, and gather diners around the table for classics including oysters, baked clams and tableside Caesar salads, generous bowls of pasta and meaty platters of chicken parmesan and chops. "At Harry's, it's the martini bar, power lunch and power dinner," owner Peter Poulakakos explains.

Hip sibling Adrienne's is the perfect complement, with square-style pizzas, plus roasted mains and sides from the pizza oven, and carafes of Italian wine ideal for sipping on balmy evenings. This Adrienne's will be larger than the New York storefront. "Here we'll have opportunities for more after-work functions, larger lunch, larger brunch and even dynamic business dinners," explains Poulakakos.

For Poulakakos, son of founder and Harry's namesake Harry Poulakakos, this was also in many ways a family decision. "My dad is now a resident of Florida. He wanted a restaurant...to hang his hat," the younger Poulakakos says. "From a family aspect, business aspect and expansion aspect, 360 Rosemary is the right move."

ESTIATORIO MILOS

Flavors will continue to explode as Costas Spiliadis brings the tastes of Greece to the forthcoming flagship One Flagler office development in 2024 with his world-renowned restaurant, Estiatorio Milos. The chef and owner, who operates eight Milos outposts in cosmopolitan cities around the world, including Miami's South of Fifth district and Hudson Yards in Manhattan, is acclaimed for his exceptional Mediterranean cuisine, delectable fish dishes and elevated versions of Greek favorites.

West Palm conjures some of the same ideals as Spiliadis' native country with warm weather, water views and lush flora with expansive outdoor seating in a garden setting. For Spiliadis, who flies in fresh fish from the Mediterranean each day, it's a natural fit for the pillars of his Milos brand: the food, the open, airy space and the commitment to familial hospitality. "Milos and Related have a partnership that will be further strengthened with this amazing new property," says Spiliadis.

FORWARD-THINKING RESTAURATEURS

For each of these culinary leaders, West Palm presents an opportunity to showcase exceptional cuisine in one of the most exciting and vibrant cities in the country. "We see a bright future being a part of this thriving culinary and entertainment destination, as we aspire to serve the vibrant South Florida community," says True Food Kitchen's Christine Barone.

Planta's Steven Salm agrees, spotlighting the access to fresh fare. "We're developing a supply-chain ecosystem that goes north to south and supports local whenever we can." The excitement is palpable, as is the appetite for fresh, seasonal cuisine and the enthusiasm shared by the chefs and restaurateurs. "Yes, we are definitely hearing the buzz and I can tell people are moving [South]," says Poulakakos.



ALMOND PARM ROSEMARY BISCUITS FROM PLANTA

INGREDIENTS

- 2 cups cold unbleached all-purpose flour
 - 4 tbsp cold plant-based butter
 - ½ tsp baking powder
 - Pinch salt & black pepper
 - 1 tsp lemon juice
 - 1 tbsp chopped fresh rosemary
 - 1 cup almond milk
 - 1 tbsp agave to finish, optional
 - 1 tbsp almond parmesan to finish, optional
- available for purchase from Planta*

DIRECTIONS

1. Mix the cold flour, cold butter, baking powder, salt, pepper and lemon juice into a mixing bowl.
2. Add in the rosemary and mix.
3. Begin to add the almond milk until it forms a dough; you may not need all of the milk.
4. Without overworking the dough, form a two-inch high square and place in sealed container.
5. Chill in the fridge for four hours.
6. Cut into 1.5 inch squares, and brush the top with a little melted butter.
7. Bake at 425 degrees for five minutes.
8. Remove from oven.
9. Brush with agave and almond parmesan.



THE ALLURE OF WORKING IN WEST PALM

Downtown West Palm is attracting talent in all sectors—notably finance, technology and professional services—looking for opportunity and a year-round outdoor lifestyle.

Businesses are moving and expanding into this market to take advantage of the climate, economics and growing workforce, expected to increase by 11% by 2025 – more than double the national average.

And Related Southeast is ready.

As a leading owner/operator of commercial real estate in Palm Beach County, we offer 1.6 million square feet of class-A office space across five marquee buildings in Downtown West Palm, all with prime locations, stunning water views and natural light.

Our newest state-of-the-art building, 360 Rosemary, located at the northern tip of The Square joins existing office towers Phillips Point and Esperante Corporate Center at the Flagler Waterfront and CityPlace Tower at the intersection of Okeechobee Boulevard and Rosemary Avenue.

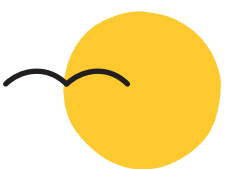
One Flagler, a one-of-a-kind workplace with club-like amenities delivered by our acclaimed fitness and culinary partners (opening in 2024), rounds out a collection of outstanding properties. Also on offer are large single and multi-tenant build-to-suit options that let your workforce scale as quickly as your business.



ONE FLAGLER

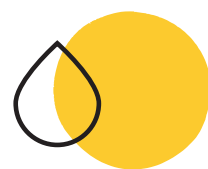
Related's 50-year track record of delivering best-in-class developments and 25 years of operating in West Palm, plus a focus on innovation, wellness, culture and placemaking, provide the confidence that businesses and professionals from all over the country will continue to flock to West Palm.

Here's a look at what it's like to work here...



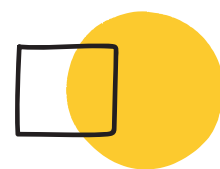
Breezy Commute

Walk, bike, scoot or ride the rails. There are so many ways to enjoy a car-free commute. For those who prefer a private, covered ride, electric car charging is available at our parking garages.



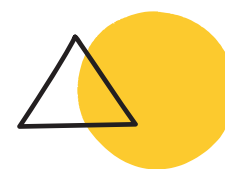
Priority of Wellness

Whether on an outdoor terrace at 360 or one of the many hot spots within The Square, office workers enjoy an oasis-like setting that enhances productivity. Fitness facilities, healthy eateries and engaging programming support mindful well-being.



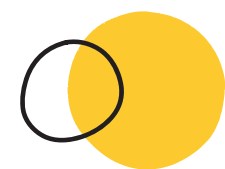
Cultural Frame of Mind

Arts and culture are everywhere, ready to lift the spirit and expand the mind. From the nearby Norton Museum of Art and Kravis Center for the Performing Arts to the public art on site, those working here every day continue to be inspired.



Eclectic Shopping and Dining

An impressive collection of retailers, restaurants and casual food operators is ready to meet the daily needs of the office community. A loyalty program with rewards geared toward the professional community will ensure employees benefit from both access and value.



Hospitality-Driven Culture

Our building staff is welcoming and helpful, friendly and professional. We hire only those with a passion for hospitality and provide ongoing opportunities for learning and development. Our teams are empowered to deliver for our tenants, which means everyone feels supremely cared for.



Connected Location

Whether situated at the Flagler Waterfront or in the heart of The Square, employees have easy access to both the Intracoastal and the vibrant city center. A focus on the public realm and walkability means an easy and connected experience while traveling between the two districts.



360
ROSEMARY





CLEMATIS STREET

EVERNIA STREET

FERN STREET

360 ROSEMARY

ROSEMARY AVE

SOUTH FLAGLER DRIVE

PALM BEACH LAKE TRAIL

FLAGLER MUSEUM

THE BREAKERS

THE SQUARE

DOWNTOWN WEST PALM

PALM BEACH

KRAVIS CENTER FOR THE PERFORMING ARTS

OKEECHOBEE BLVD

RESTORATION HARDWARE

ROYAL PARK BRIDGE

SOUTH DIXIE HWY

HILTON WPB

NORTON MUSEUM OF ART

WORTH AVENUE

DOWNTOWN WEST PALM, FL

THE

CENTER

OF THE

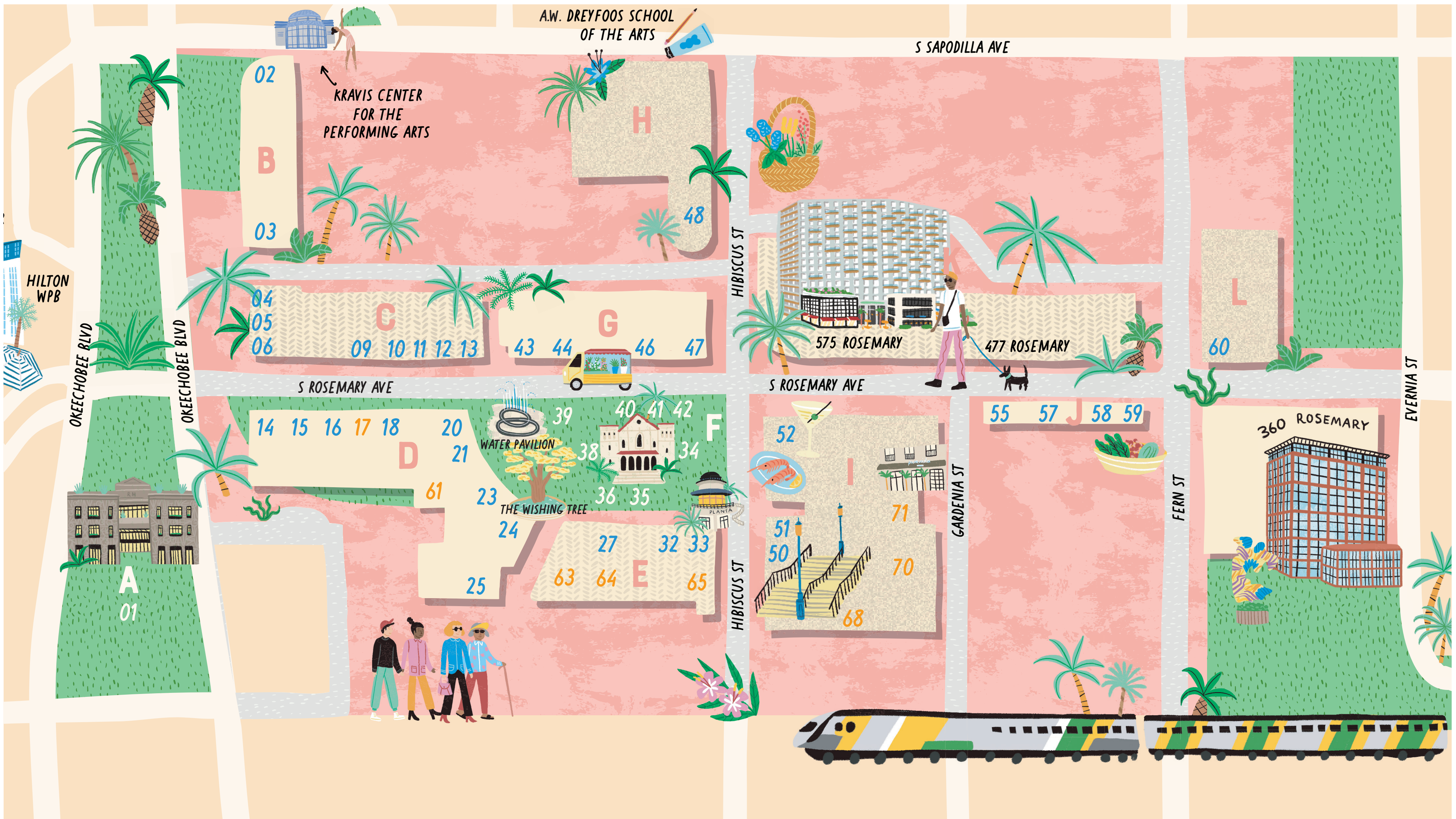
WORLD

ANN NORTON SCULPTURE GARDENS

PALM BEACH INTERNATIONAL AIRPORT

TO THE BUNKER

ANTIQUE ROW



SHOPS

- A01 Restoration Hardware
- C09 Natuzzi Italia
- C10 The Shade Store
- C11 Casper
- C13 Tommy Bahama
- D14 Lucid Motors
- D18 West Elm
- D21 Sur La Table
- D23 Urban Outfitters
- D24 Anthropologie
- E27 Life in Palm Beach
- F36 The Garden Shoppe
- F41 SEE
- F42 Rohi's Readery
- G43 lululemon
- G44 H&M
- I50 Sephora
- I51 Sunglass Hut

FOOD & DRINK

- A01 RH Rooftop Restaurant
- B02 Ruth's Chris Steak House
- B03 The Regional Kitchen & Public House
- C12 sweetgreen
- D15 BurgerFi
- D20 True Food Kitchen
- D61 Saito's Japanese Steakhouse
- E32 Sloan's Ice Cream
- E33 Planta
- E63 Barrio
- E64 City Cellar Wine Bar & Grill
- E65 El Camino
- F35 Le Macaron
- F38 Il Bellagio Italian Restaurant
- F40 Taquería Bonitas
- G46 Starbucks
- G47 The Cheesecake Factory
- H48 City Pizza Italian Cuisine
- I52 Brio Tuscan Grille
- I70 Copper Blues Rock Pub & Kitchen
- J55 The Salty Donut
- J58 Moe's Southwest Grill
- J59 Pura Vida
- L60 Publix

ARTS & ENTERTAINMENT

- F34 Harriet Himmel Theater
- F37 The Wishing Tree
- F39 Water Pavilion West Palm
- I68 AMC 12 Movie Theater
- I71 Improv Comedy Club & Dinner Theater

SERVICES

- C04 TD Ameritrade
- C05 Anushka Spa Salon & Cosmedical Centre
- C06 Capital One
- D16 LA Fitness
- J57 Venetian Nail Spa

GUEST SERVICES

- D25 Gift Cards
- D25 Strollers & Wheelchairs
- D25 Lost & Found
- D25 Bag & Luggage Storage
- D25 Phone Charging Station

RESIDENTIAL

- The Flats
- 575 Rosemary Coming Soon





Living in DOWNTOWN WEST PALM

Welcome home to the heart of West Palm. The Square offers residents the chance to live in the lush center of one of Florida's most exciting cities with exceptional walkability and miles of waterfront paths, tropical gardens and easy access to shops, restaurants and offices. In prime locations with unparalleled amenities and Related's acclaimed service-driven management platform, The Square's premier rental buildings aim to satisfy every desire and fit every lifestyle.



THE FLATS

Conveniently located in the heart of The Square, The Flats offers expansive loft-like one- and two-bedroom apartments overlooking the neighborhood's green spaces, art installations and buzzy shops and restaurants.

LUXURY LIVING BREAKS NEW GROUND

The first residential offering of its kind in the area, 575 Rosemary is a resort-style luxury rental residence in the center of The Square. Designed by world-renowned David Manfredi of Elkus Manfredi Architects, project architect LEO A DALY and interiors firm Meyer Davis, this bright and inviting space is vivid with color and texture, reflecting a true oasis at the heart of Downtown West Palm. Amenities include rooftop gardens, private movie theater,

children's play space, state-of-the-art fitness center and vast, lush landscaped pool deck including waterside daybeds, chef's kitchen, indoor/outdoor yoga studio, pool bar and hot and cold plunge pools. Residents will also enjoy access to Related Life, a unique program with events in-building and within the community, including private dinners with local chefs and curated activities for families, professionals, social seekers and pet owners.

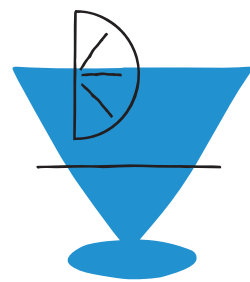
Opposite page: Lobby and exterior of 575 Rosemary
Below: Resort-style pool deck at 575 Rosemary



THE PERFECT STAYCATION



Check into Hilton West Palm Beach for a weekend of discovery and adventure or for a quiet reprieve by the pool. No matter your scene or style, plan your unforgettable itinerary all within walking or biking distance.



THURSDAY LIVE LIKE A LOCAL

AFTERNOON KICK BACK & RELAX

Head to The Square, grab a seat and enjoy the tropical oasis.

EVENING DISCOVER HOT SPOTS

Listen to your favorite tunes at *Copper Blues* while enjoying the pub's famous burger.

FRIDAY BUSINESS TRIP...EXTENDED

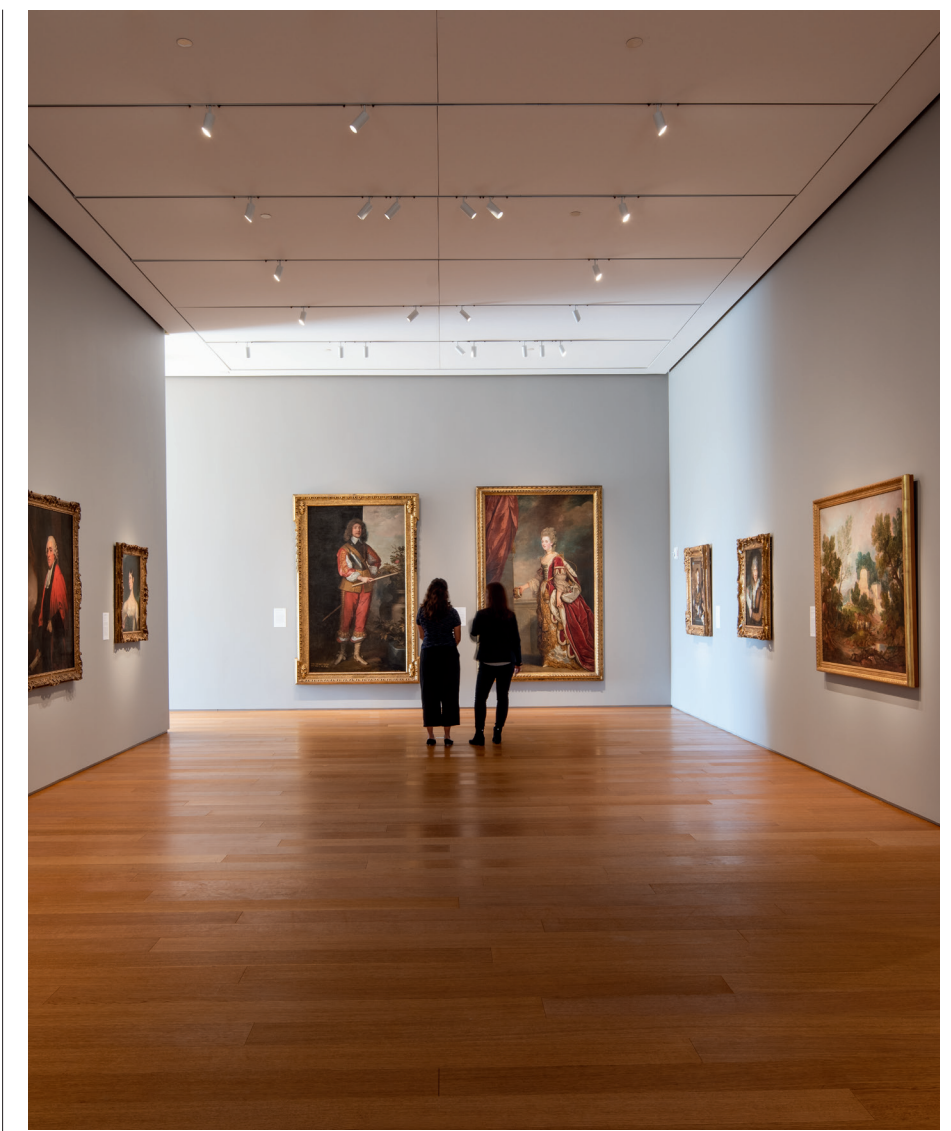


AFTERNOON DIVE IN

Pick up a swimsuit from *Tommy Bahama* for a dip at the pool.

EVENING TOAST THE TROPICS

After dinner at *Barrio* overlooking the square, stroll to *The Salty Donut* for a sweet treat and visit Yinka Shonibare CBE's larger-than-life sculpture at the base of 360 Rosemary.



SUNDAY EXPLORE THE ARTS

AFTERNOON FEED YOUR CURIOSITY

Enjoy a smoothie and a bowl at *Pura Vida* – don't miss the almond croissant! Stroll through The Square to interact with the many inspiring public art pieces: *Water Pavilion West Palm*, *The Wishing Tree*, *MEIYW* LED light installation and 2,000 square feet of art murals by Chalk & Brush.*

MORNING TALK ART

Meet the New Wave artist-in-residence at the pop-up studio, then wander over to the Norton Museum for their world-renowned collection.

Slip behind the wheel of *Lucid Motors'* Air Touring model and experience sustainable luxury.

SATURDAY FAMILY ADVENTURES

MORNING ENJOY CABANA LIFE

Pop into *H&M* for finds for the whole family. Reserve a cabana for all-day fun at Hilton West Palm Beach's resort-style pool.



AFTERNOON PLAY "I SPY"

Explore the waterfront along the Intracoastal Waterway. Keep your eyes peeled for manatees.

EVENING TREAT YOURSELF

Order two pizzas (margherita for the kids and capri for the adults) from *City Cellar*. Indulge in a scoop (or two) at *Sloan's Ice Cream* or a slice of cheesecake from *The Cheesecake Factory*.

*See *Culture Central* for details



GET TO KNOW THE LOCALS

Through their passions, entrepreneurial pursuits and love for their city, these Palm Beach County citizens are helping shape The Square and enhance the community.



Mike Kane, a co-founder of The Garden Shoppe, located at The Square, teaches all generations that successful gardening is not dependent on a green thumb but a positive mindset.



As founder of the New Wave artist-in-residence program, **Sarah Gavlak** (left) brings emerging artists from underrepresented communities to a pop-up studio at The Square, allowing creatives such as mixed-media interdisciplinary artist **Estelle Maisonett** to showcase her work to an art-centric community.



Van Richardson's infectious smile and attitude are evident from the reaction of the subjects in the thousands of photographs he takes at The Square and throughout South Florida.*



A former elementary school educator, **Pranati (Pranoo) Kumar Skomra** has created a community and large following at The Square with Rohi's Readery, a social justice-driven children's bookstore with dozens of weekly events that are free and open to the public.



Ghislain d'Humières is the new director and chief executive of the Norton Museum of Art, which holds the region's foremost collection of American, European, contemporary and Chinese art and photography.



Fueled by an infectious positive attitude, **Alex Celis** is the co-owner of Celis Produce, now with two West Palm locations, and leads a monthly run club through The Square as a lululemon West Palm ambassador.



Restaurateurs **Ricky and Niria Perez** continue to pay homage to their culture and creativity with Taqueria Bonitas, a food concept that serves tacos, tostadas and more.

The impact of The Square neighborhood on downtown as a whole is tremendous. It's been truly impressive to watch the transformation.

Raphael Clemente
Downtown Development Authority



As executive culinary director and chef partner, **Lisabet "LB" Summa** leads the culinary and kitchen operations for multi-concept Big Time Restaurant Group in South Florida.



Avid biker, West Palm enthusiast and Downtown Development Authority Executive Director **Raphael Clemente** is an agent for positive change through collaborative projects, programs and policy.



As leader of the Quantum Foundation, **Eric Kelly** leads by example, making a large-scale impact on the health and well-being of those most in need in Palm Beach County.

WELLNESS IS OUR WAY OF LIFE

7 WAYS TO ENRICH YOUR EVERY DAY



1 FITNESS ACTIVITIES

Get out and get moving at The Square, where locals and friends gather for biweekly yoga and HIIT classes, as well as a run club that starts and ends at the lawn.

Every element of The Square has been thoughtfully considered to help people feel great and live better. With a design that maximizes natural light, promotes walkability and provides welcoming green spaces, as well as art installations, cultural programming and fitness classes that enrich and inspire, wellness is integral to the community's ethos. The concern for our environment is reflected in Related's sustainable development and management practices, plus collaborations with eco-conscious brands.



2 GREEN & PUBLIC SPACES

Thrive in an urban oasis, with swaying palms, a lush lawn with bistro seating for midday pauses and world-class art installations to take in during strolls through the grounds.



3 HEALTHY FOOD OPTIONS

The restaurants at The Square share a focus on mindful ingredients, balanced menus and local sourcing, serving flavorful food that fuels the body and is good for the environment.



4 AMENITIES FOR LIFE & WORK

Our residences and workspaces let in natural light and offer wellness-oriented design, prime walkability and direct access to bike routes and public transportation.



5 SUSTAINABLE BRANDS

The neighborhood supports businesses that minimize their carbon footprint, including plant-based restaurants, sustainable fashion lines and showrooms for green technologies of the future.



6 ACCESS TO WATERFRONT

The Square sits just a few blocks from the Intracoastal Waterway, with miles of scenic waterfront running paths and bike routes and easy access to the water.



7 WELLNESS FOR PEOPLE & PLANET

Related is committed to sustainable development and to eco-friendly operations. The Square is designed to connect its visitors with art, culture and nature at every turn.

THE ULTIMATE
SHOWCASE
 FOR
BRANDS

The Square encourages experiential environments with local flavor that transcend the traditional shopping experience.



SHOP THIS SCENE

The expansive *West Elm* store and hands-on designers offer inspiring and stylish solutions for home furnishings and accessories, from bedding to bathroom and from dining to décor.



WHAT'S FOR DINNER?

Sur La Table's in-person, weekend and weekday cooking classes will make a culinary master out of anyone. Recipes range from macarons to bread, lasagna and gumbo.

WELL RESTED

Sweet dreams are forthcoming. Through private appointments or a scheduled power nap (yes, it's allowed), sleep company *Casper* helps you find your mattress soul mate, and more.



RIDE OF YOUR LIFE

Lucid Motors brings your dream car to life. Inside its luxurious studio, you can personalize your car's interior finishes, materials and exterior color by using a 4K VR configurator.

SHOPPING FOR HOME AND FASHION, REIMAGINED

Scout your favorite modern home accessories and must-have furniture at the expansive *West Elm* location. Visit the two-story *Urban Outfitters* for the latest trends in fashion and home décor; grab a glass of champagne and wander the four *RH West Palm* gallery floors before watching the magical sunset at *RH Rooftop Restaurant*. Adorn your home with living plants and artwork from *The Garden Shoppe* featuring artist Sarah LaPierre.



KIDS THE SQUARE

A PLACE MADE FOR ALL GENERATIONS, ESPECIALLY KIDS.



WORD SEARCH

Can you find all of the 14 hidden words in this word search? Here's a hint: the words go in all directions.



- | | |
|---------|----------------|
| ARTS | SUNSHINE |
| FLORIDA | WATER PAVILION |
| FOOD | WEST PALM |
| LIVE | WISHING TREE |
| MUSIC ✓ | WORK |
| SQUARE | DINE |
| SHOP | PLAY |

CHECK OUT THE ANSWERS AT WORLDINWESTPALM.COM



THINGS FOR KIDS

1. PLUNGE INTO THE ZERO-ENTRY POOL AND ENJOY LAWN GAMES AT HILTON WEST PALM BEACH
2. DIVE INTO A CHEESY LUNCH AT CITY PIZZA
3. UNLEASH YOUR INNER ARTIST WITH AN ART WORKSHOP AT THE NORTON MUSEUM OF ART
4. EXPERIENCE HIBACHI AND ENTERTAINMENT AT SAITO'S
5. RUN IN AND OUT OF THE WATER PAVILION "ROOMS" ON THE PLAZA AT THE SQUARE
6. GET A SUGAR HIGH AT SLOAN'S ICE CREAM
7. MAKE A WISH DURING THE WISHING TREE NIGHTLY LIGHT SHOW
8. GET INSPIRED BY RH BABY & CHILD'S COLLECTIONS
9. SIP A MILKSHAKE AND NOSH ON A BURGER AT BURGERFI
10. POP OVER TO THE LAWN FOR TGIFAMILY (CHECK OUT OUR WEBSITE FOR EVENT INFORMATION)

GUESS WHERE

Find these locations, share your images and post using #thesquarewestpalm for a chance to be featured on The Square's Instagram page.



MEET THE VISIONARIES

Twenty-five years ago, Related developed CityPlace in Downtown West Palm and has been invested in the community ever since. Recently reimagined and rebranded as The Square, this neighborhood is expanding with new office, residential and retail properties, creating a dynamic place that is primed to become South Florida's premier live-work-play destination.

We could not have done this alone. Our team has been working with the world's most talented and respected visionaries — leaders in the fields of architecture, art, design, planning and municipal government who care about this great place as much as we do.



From left: Ken Himmel, Stephen M. Ross and Gopal Rajegowda

STEPHEN M. ROSS
CHAIRMAN & FOUNDER
RELATED COMPANIES

“Cities need diversity, equity, sustainability and socially responsible practices to thrive. As we lay the foundation for inclusive growth and opportunity for all, West Palm is poised for great success.”

KEN HIMMEL
PRESIDENT & CEO
RELATED URBAN

“Our 25-year relationship with the city has enabled us to build a portfolio of world-class properties within a vibrant live-work-play neighborhood. We have the infrastructure in place to support West Palm's growth and the passion to create an inclusive community for all who call it home.”

GOPAL RAJEGOWDA
PARTNER
RELATED SOUTHEAST

“Our organizing principle around development of mixed-use urban neighborhoods is that creative, inspiring, inclusive environments drive fulfillment, happiness and productivity. The Square serves as a physical and intellectual oasis for people who work at, live in and visit this special place.”



MAYOR KEITH JAMES
CITY OF WEST PALM BEACH

Mayor Keith James is committed to creating a city of opportunity for all through a customer-friendly culture that focuses on neighborhood initiatives, regional collaboration and community partnerships.

“West Palm Beach is experiencing significant economic growth. The innovative energy of The Square is contributing to that growth by bringing national brands and local businesses to an experiential environment and generating community support and engagement. I commend Related for continuing to push the envelope and effect meaningful transformation in our city.”



**MATTHEW LISTER
GEHL**

Matthew Lister focuses on the intersection of real estate strategy and the design and activation of thriving public spaces. Realizing that public spaces are the heartbeat of the city, Matthew worked with Related to create a place that attracts, connects and inspires people and encourages engagement, within a walkable, lush urban oasis setting.

“The everyday life that unfolds in streets, plazas, parks and spaces between buildings is vital to our well-being. Vibrant public life promotes civic agency, supports health and sustainability, builds social capital and connects people to their local communities.”



**WILL MEYER
AND GRAY DAVIS**
MEYER DAVIS

Will Meyer and Gray Davis are designing a set of seamless, experiential interior spaces at 575 Rosemary, tailored to our collective vision for the property and the lifestyle of the future residents.

“Inspirational interiors will make you feel like you're transported to a special place. We're so excited to bring our ideas and expertise to the new emerging creativity in West Palm.”



DAVID CHILDS
SKIDMORE OWINGS & MERRILL

David Childs is renowned for designing buildings that fit perfectly within the context of their neighborhoods. His work as architect of the upcoming One Flagler brings a leading-edge office building to the historical site at West Palm's burgeoning Flagler Waterfront district.

**BERNARDO
FORT-BRESCIA**
ARQUITECTONICA



Bernardo Fort-Brescia is contributing his planning and design expertise to help craft the next generation of development at The Square.

“West Palm is at a tipping point and emerging quickly into one of the most exciting cities in the country. My passion is being part of emerging cities and contributing to their growth.”



**YVONNE FORCE VILLAREAL
AND DOREEN REMEN**
CULTURE CORPS

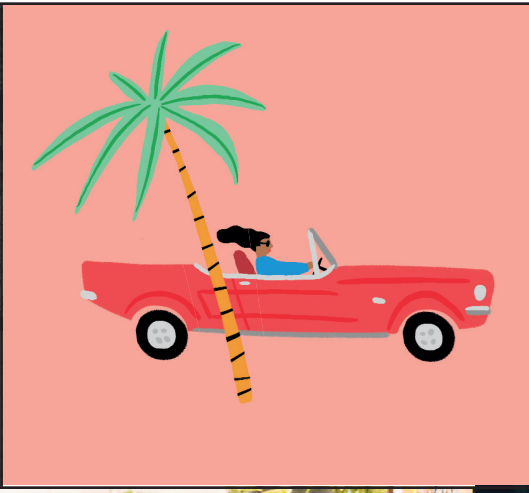
The New York-based duo behind boutique art advisory Culture Corps, Yvonne Force Villareal and Doreen Remen have brought international and local artwork to this South Florida destination, helping to put it on the cultural map and shedding light on important topics through art.

**DAVID MANFREDI
ELKUS MANFREDI**
ARCHITECTS



The original master planner of the district in 2000 and the design architect of 360 Rosemary and 575 Rosemary, David Manfredi is taking a fresh look at the neighborhood and bringing Downtown West Palm into the future.

“It's been amazing to see West Palm evolve over the last 20 years. The new buildings and public spaces will breathe new life into the neighborhood, helping the city look toward its bright future.”



BE A PART OF IT



RELATED'S WEST PALM OFFICE COLLECTION

WORLDINWESTPALM.COM

